



# The Cross Word

March 2017

## From The Pastor

This week begins the season of Lent, a period of 40 days (not counting Sundays) which lasts from Ash Wednesday on March 1st until Easter Sunday, April 16th, when we celebrate Christ's resurrection.

In the earliest days of Christianity, this was a time of preparation for people who wanted to be baptized. For 40 days they fasted and learned about the faith, repenting of their sins. "Lent" is from an Anglo-Saxon word that means "springtime," and so it is understood to mean a holy springtime of the soul, a time for preparation, planting and growth.

Over the centuries, Lent has continued to be observed by Roman Catholic and many Protestant churches. It is a time for penitence and for reflection on the quality of our faith and life – a season of spiritual growth focusing on our relationship with God. Purple is the color of penitence, which is why our altar paraments and the pastor's stole change to purple for this season.

You may have heard of "giving up something" for Lent; a practice related to penitence (if giving up a vice, or something less than good for us, anyway, such as smoking, drinking pop or eating chocolate). The idea is that then we use the time for reflection or prayer instead, and the money we would have spent on such items for charity. Fasting is a spiritual discipline which symbolizes penance and remorse for our sins. Again, one could use the time for prayer or devotions that would otherwise have been spent eating. Many Roman Catholics still practice giving up meat on Fridays, a form of fasting, throughout the season of Lent.

Other Christians "take something on" for Lent to augment their spiritual growth, such as daily Bible reading or devotions to deepen their prayer life. Along with this newsletter and in the narthex at church we have provided three opportunities to "take something on" during Lent. One is "Walking with Martin Luther," a journey that takes you, virtually, to various sites where Martin Luther lived and worked during Reformation times. You color in a box representing 15 minutes of walking or physical exercise you do each day, and can finish the whole Reformation journey in Lent doing one box each day. Spiritual wellness and physical wellness are closely linked, and you can pray as you walk! Bring your completed sheets in at the end for a commemorative "prize."

Another comes to us from ELCA World Hunger, and is a 40 day calendar called “Living Simply with God.” Each day holds a suggestion for an activity or a reflection, which sometimes include making a small contribution (for instance, for each time you travel by car today). You are encouraged to keep a hunger piggy bank (we will have some available) to collect these small offerings over the month. At the end, you can bring them (or a check) to the church and we will send in our whole congregation’s offering to ELCA World Hunger, which helps folks in the USA and around the world.

A third option is related to the large coloring posters on tables around the narthex that we hope you will help to finish! 8-1/2” by 11” coloring sheets are available for you to take home and color, as well as a devotional guide to the Stations of the Cross on which the posters and coloring sheets are based. (These documents are too large to attach to emails, so if you cannot come to church and would like them sent to you, please email the church or give us a call.)

I hope you’ll make use of one or more of these opportunities and ideas to dive deeper into your faith this Lenten season.

One last thing: The Scriptures are deep. There is only so much that can be said in a 10-15 minute sermon. If you are intrigued by a section of the Scripture we hear in worship; are captured by an idea presented in the sermon; or are at odds with a direction it goes – please, engage me or whoever has preached in deeper discussion. Who we are as Christians is, and should always be, shaped by Scripture. The door is always open – let’s talk if you want to explore it further!

Blessings. See you in church!

Pastor Lisa

## Library Book Review

The Yarn Whisperer  
by Clara Parks  
Submitted by Eunice Sanders



In this book the author uses the metaphor of knitting to tell her own story. It has twenty two essays, some funny; some poignant and all with a message. She draws parallels between knitting and real life experiences. For life really is a stitch. It has a beginning; a midpoint and an end. It serves a purpose and if we are lucky it creates something real and beautiful.

### Our church is having a Reformation 500 Bookstore!



The 500th anniversary of the Reformation is fast approaching! Do you want to learn more about Martin Luther, his writings, and their impact on Christianity? Do you want to reflect on the ongoing impact of the Reformation today? Stop by our Reformation 500 Bookstore and shop for engaging books on the Reformation for readers of all ages and interests!

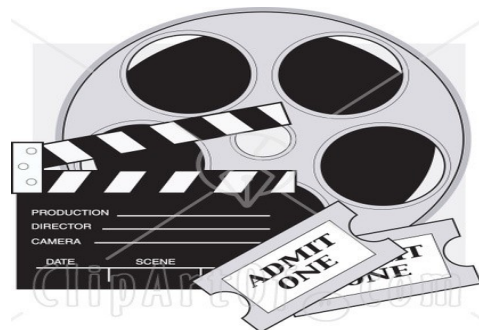
Stop by the table in the narthex before and after worship during the month of March to get fascinating books on the Reformation for you and your family.

Our Bookstore is sponsored by Augsburg Fortress, the publishing ministry of the ELCA. The books include bestselling biographies like *Luther the Reformer* as well as an atlas of the European Reformations, a graphic novel for young readers, and primary sources from The Annotated Luther series.

Join Deb Carpenter and the other movie buffs from LCC for **“Friday Night @ The Movies”**, March 10th. Supper is at 6:30pm, and the movie kicks off around 7pm.

Feel free to invite friends to the event. We always have great food including desserts and popcorn.

Deb usually sends out an email enticing us with details about the movie but never giving it away. We never know what the movie will be, but it's always good, thanks to Deb!



## Church Council and C2 Committees

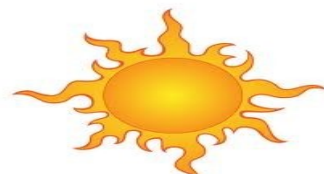
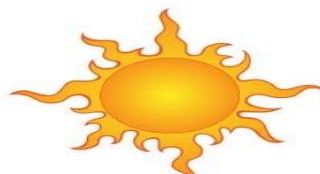
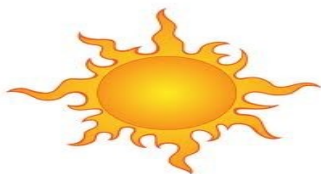


The format of the C2 Committees is being resurrected. Beginning on March 14 all of the committees will begin to meet at 5:30 with a supper of pizza and salad during the committee meetings. Will each of the committees chair people call in to the office with the number of people attending the C2 meeting for a pizza count. The pizza will be piping hot and the salad refreshing. The church council's meeting will follow at 6:30.

**HEAT THE CHURCH** begins November 1 and runs through March 31.

Thanks to the following people who have donated towards the Heat the Church Fund for the month of March in honor of loved ones.

Mark & Val Kunze  
Laurie & Jon Spilde  
John And Myrtice Behan  
Ken Traynor  
Dawn Hultin  
John & Janet Doerner  
Terry & Sally Grenz  
Mike & Kim Humann  
Keelin Traynor  
Rich Fockler  
Gary & LaVonne Hultin  
Molly Traynor  
Megan Bassingthwaite  
Nora Traynor

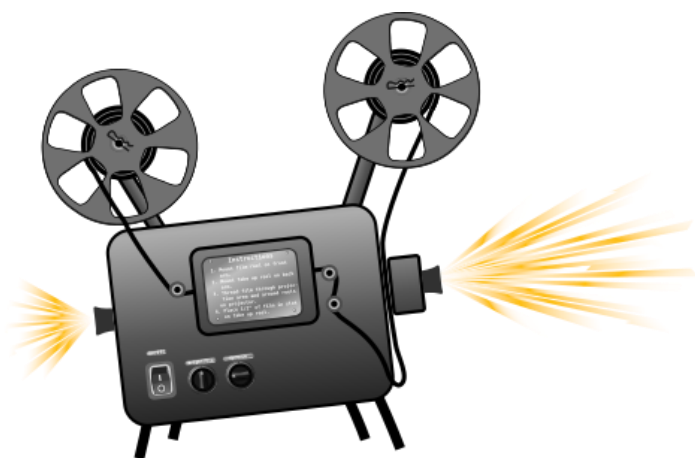


All women are welcome! **Women's Retreat:** April 21 through 23 at Camp of the Cross, please join us in discussing 'Bloom Where Planted' theme, through Bible verses and poems that Deb Carpenter has planned. The registration form is in the narthex. Cost is \$112. Make checks payable to Lutheran Church of the Cross. Questions contact: [sally-grenz@hotmail.com](mailto:sally-grenz@hotmail.com) or 701-390-3049.



### Budget

General fund budget: January	\$27,716
General Fund contributions: January	\$22,004
Building Fund budget: January	\$5,544
Building Fund contributions: January	\$4,279



We are looking for more **projectionists**, **streamers**, and **sound people** for Sundays and Wednesdays. Contact Tim.

If interested in becoming a **member** of this church, please speak to Pastor Lisa or contact the church office. The membership form can be found in the back of the church or in the narthex. A two-part informal class Feb. 26 and March 5 during coffee hour will be held. March 12 will be **New Member Sunday**. A reception will follow of coffee and cake. Plan on attending and welcoming our new members.

**WELCOME**  
new members  
.....

# Camping with Christ

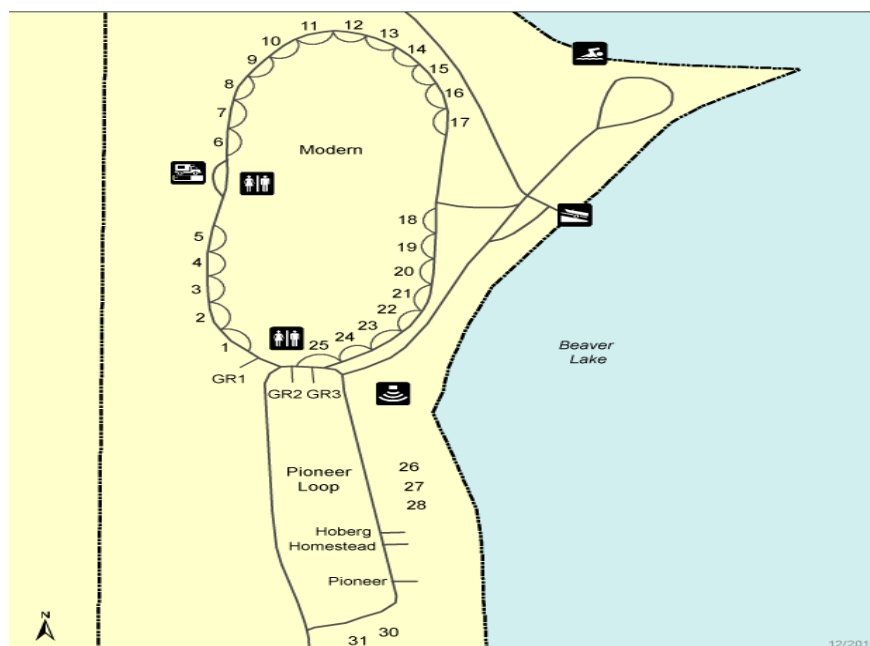
## Let's do it!

We're planning a "**Camping with Christ**" weekend on June 9 -11 at Beaver Lake State Park (<http://www.parkrec.nd.gov/parks/blsp/facilities.html>), approximately 90 miles SE of Bismarck.

If you are a camper, or would like to try camping, regardless of the mode/type (*tent, motorhome, pickup camper, travel trailer, or Beaver Lake State Park offers cabins for rent*), we'd love to have you join us for this "Camping with Christ" weekend.

We'll do a group campfire on Friday evening, a Saturday morning (10AM) nature hike (*led by a local expert who grew up in that area*) and a pot luck picnic dinner on Saturday evening (6PM), followed by a Campfire and Smores! Beaver Lake State Park offers group shelters, where we could hold an outdoor "informal" service on Sunday morning, if the group would like. If you can't make it for Friday evening, come down on Saturday and join us for Saturday evening's potluck, campfire/s'mores..

Campsite and/or cabin reservations (*make these early because they tend to get booked early*) can be made on their "Online Reservation System" at: <https://apps.nd.gov/pnr/sp/services/public/main.htm> or by calling their Call Center (7AM to 7 PM) at 800-807-4723. We suggest the North end of the Modern campground (sites 9 – 15, although all sites are good), which are closest to facilities, playground and the picnic shelter we can use for Sunday morning's "informal service".



If you have any questions, please contact Ken Will (258-7172 or [kenwill@bektel.com](mailto:kenwill@bektel.com)) or Jon Hanson (391-3416 or [jdhanon56@gmail.com](mailto:jdhanon56@gmail.com))



## **March Altar Focus is “Sweet Deal for C.A.R.”**

The Western North Dakota Synod, the Eastern North Dakota Synod and the Texas Louisiana Gulf Coast Synod are companion synods with the Evangelical Lutheran Church in the Central African Republic.

We walk together in several ministries:

- ❖ **Village Education Project which provides elementary education and schools to students in over 20 villages and towns**
- ❖ **Emmanuel Health Center in Gallo which provides medical services to a large area**
- ❖ **Mary Martha Women’s Center which provides training in sewing and literacy**
- ❖ **Spring boxes that help keep water safe for drinking**
- ❖ **Seminary training**
- ❖ **Scholarships for young women to attend high school**
- ❖ **Scholarships for young adults to attend the university in Bangui**
- ❖ **Motorcycles to provide transportation for church workers**

Did you know?

- ❖ **The population of the CAR is around 4.6 million.**
- ❖ **About half of the population was displaced during the recent civil unrest.**
- ❖ **The average income prior to the unrest was around a dollar a day.**
- ❖ **The CAR is about the size of Texas.**
- ❖ **The churches of the Western ND Synod raised over \$30,000 last year (mostly through M&M sales - Sweet Deal for C.A.R. Project) that went directly to CAR ministries.**

**Please consider taking one or more M&M containers home with you and, during the course of the next month, filling them with quarters. Totally filled amounts to \$14. You can return them to the church when filled, or at the end of the period.**

There are Lenten Devotionals placed in the narthex for your taking.

“Living Simply with God” is a 40 day hunger calendar asking us to be engaged in the world with an emphasis on doing small things within our families or by ourselves. Five pages taking us along a journey one day at a time.

#### “Stations of the Cross”

Is a devotional guide that goes along with the large and small coloring pages out in the narthex. There are 15 stations. Each station has a scripture for reflection. There is a section each on reflections for adults and children, a section on discussion with children and a section called going deeper. This project has been a collaborative effort amongst 30 different denominations. It is new for this year.



#### “Here We Walk: A Lenten Journey with Martin Luther”



This journey is asking us to be or become physically active. The map will take you past the places that were important in Martin Luther's life. Information is also given on those towns/ places. An interesting tidbit was Luther represented the Augustinian Order at a meeting in Rome in 1510. To get there he walked he walked 1000 miles through the Swiss Alps into Italy. He averaged 26 miles per day.



# March 2017

Sun	Mon	Tue	Wed	Thu	Fri	Sat
			<i>1 LAF</i> <b>Ash Wednesday</b> Lenten supper 4:45-5:45 6:00 Fusion Worship 6:45 Church	<i>2</i> Quilting 1pm 8:00 AA Mtg.	<i>3</i>	<i>4</i> 4:30 River Practice Optional
<i>5</i> 9:00 River Practice 9:15 Sunday School 10:00 River Worship 11:00 Coffee Hour/ <b>New Member class #2</b> 6:30pm Fusion Practice	<i>6</i>	<i>7</i> 10:00 Staff Meeting	<i>8 LAF</i> Lenten supper 4:45-5:45 6:00 Fusion Worship 6:45 Church School/ River Practice	<i>9</i> Quilting 1pm 8:00 AA Mtg.	<i>10</i> 6:30 Friday Night @ the Movies	<i>11</i> 12:30 Book club @ LCC 4:30 River Practice Optional
<i>12 New Member Sunday</i> 9:00 River Practice 9:15 Sunday School 10:00 River Worship 11:00 Coffee Hour/ Reception 6:30pm Fusion Practice	<i>13</i>	<i>14</i> 10:00 Staff Meeting 5:30 C2 Mtg/ Supper provided 6:30 Church Council	<i>15 LAF</i> Lenten supper 4:45-5:45 6:00 Fusion Worship 6:45 Church School/River Practice	<i>16</i> Quilting 1pm 8:00 AA Mtg.	<i>17</i> articles due for newsletter	<i>18</i> 4:30 River Practice Optional
<i>19</i> 9:00 River Practice 9:15 Church School 10:00 River Worship 11:00 Coffee Hour 6:30pm Fusion Practice	<i>20</i>	<i>21</i> 10:00 Staff Meeting 1:15 LWT Bible Study @ church	<i>22 LAF</i> 6:30a MM Bible Study @ Panera's Lenten supper 4:45-5:45 6:00 Fusion Worship 6:45 Church School/River Practice	<i>23</i> Quilting 1pm 8:00 AA Mtg.	<i>24</i>	<i>25</i> 4:30 River Practice Optional
<i>26</i> 9:00 River Practice 9:15 Sunday School 10:00 River Worship 11:00 Coffee Hour 6:30pm Fusion Practice	<i>27</i> 1:00 Knitting for Others	<i>28</i> 10:00 Staff Meeting	<i>29 LAF</i> Lenten supper 4:45-5:45 6:00 Fusion Worship 6:45 Church School/River Practice 8-9:30 Youth Group	<i>23</i> Quilting 1pm 8:00 AA Mtg.	<i>31</i>	



1004 E Highland Acres Rd

Bismarck ND 58501

Phone: 701-223-1001

Office Email: lcc@btinet.net

Pastor's Email: lisaahlness@hotmail.com

Website: www.churchofthecross.org

## E-News

March 2017

## Church of the Cross Council/Staff Members

### 2017 Church Council

Ken Will, President	258.7127
Jon Hanson, Vice President	391.3416
Jeff Thomas, Secretary	955.3632
Kim Humann	255.6547
Brian Johnson	221.9688
Kylie Blanchard	391.0373
Tom Harris	751.6371

The Church Council and the C2 Committees meet once a month; the second Tuesday, at 5:30pm. The Council meetings (at 6:30pm) are open to the congregation and all are encouraged to attend a meeting or to visit with a Council member if you have questions or concerns regarding the church.

### Church Staff:

Pastor Lisa Ahlness, Pastor

Phone #701.220.9011

Email: lisaahlness@hotmail.com

Tim Newman, Pastoral Assistant

Phone #258-1651

Email: clarityatfaith@gmail.com

Connie Werner, Secretary

Phone #223.1001

Email: lcc@btinet.net

Art Wheeler, Treasurer

Email: lcctreasurer@btinet.net

Robin Johnson, Worship Coordinator

Phone 391.1082

Email: theriver@btinet.net

Gareth Fay/Robin Johnson/Gerri Sarsten

Organists/Accompanists

Joel & Jan Gilbertson, The "River" Accompanists