



From Pastor Lisa

Once on a service project I was watching the workers pour a concrete stage. They laid down steel rods, and then as they poured the cement, they pulled the rods up so they would be in the middle of the concrete as it hardened. This is the concept called "reinforced concrete." That much I know. But, being a dummy on construction matters, I asked how this worked.

The worker picked up one of the rods and his muscles bulged as he bent it. "Look," he said, "it bends if you push on it. But you could never pull it apart. It could pull that truck over there. On the other hand, a piece of concrete is easy to pull apart. But if you push down on it, it won't bend."

"So?" I cleverly asked.

"So," he said, "They've got opposite strengths: the steel is strong when you pull; the concrete is strong when you push. Put them together, and it's strong both ways. That's how we can build tall buildings and bridges. Concrete by itself or steel by itself wouldn't be strong enough."

Later, I happened to be reading about an experiment done by a naturalist with Processionary Caterpillars. Those little critters will follow the next caterpillar ahead of them, no matter where that caterpillar happens to be going. The naturalist arranged a bunch of the little fuzzy fellows in a neat circle, each one touching the one just ahead. Faithful to their DNA, each one followed the next one. Then some of the caterpillars' favorite food was placed in the middle of the circle. Do you think they stopped following, even for a moment, for a bite of lunch? Nope. The food was there within inches, but they just kept on following each other in circles until they collapsed and died from hunger.

And the moral of these two tales is that you shouldn't hang around too much with people you agree with or with people who are too much like you!

Lutheran
Church of the
Cross

April
2018

Inside this issue:

Pastor's Letter	1,2
Announcements	3,4
Church Council	5-7
Why I Give?	8
Stewardship	9
Holy Land	10-13
Calendar Letter from Council President	14 18-19

I could use myself as a really good bad example. I love hanging out with people who are full of ideas and creativity and short on self-discipline. We tend to know the same songs and remember the same bad jokes, gripe about the same politicians or whine about the same institutions. We can talk for a long time about this stuff!

It's fun, but a case could be made we're like the caterpillars going around in circles, following each others' hind ends. It's really comfortable, but intellectually, eventually we're famished. It's fun being with like-minded, creative people, and it's upsetting when someone who insists on being practical joins in - someone who starts writing down numbers and working out flow charts.

Of course, if you have a lot of number crunchers and flow-chart people sitting around by themselves, you will wind up with lots of numbers and charts, but nothing much else. Caterpillars again.

However, if you can put the two kinds of folk together, or - why not?- get three or four or five different kinds of gifted people together, and let them see how much they need each other, things really start to happen. Trouble is, sometimes their first instinct is to scratch each others' eyes out. It's not always easy to get people with opposite characteristics to genuinely appreciate each other and work together.

When we are ready to acknowledge our weaknesses and appreciate other people's complementary strength - when we are ready to listen to ideas and opinions we've never thought of before - then we can stop going around in tight little circles and build the vision we dreamed of. Now, certainly, we are not all opposites. And there aren't just two kinds of us; there are many different gifts! And we're all part of the body of Christ.

I really enjoy working together with many of you. Don't ever think I'm not grateful for all the gifts you bring! God made each one of us unique and important. May God continue to call us to dream big. Thanks be to God for lessons from concrete and caterpillars!

See you in church! Pastor Lisa

Pastor Lisa's
letter
continued

a Smile in One Eye: a Tear in the Other by Ralph Webster

This is a book about World War II that gives a different view of the situation in Germany during the war.

As the war progresses and German Jews are persecuted, many are leaving for countries such as England, Canada, the United States and Shanghai, that have opened their doors to refugees. The Wobers were told they were Jews because their grandparents on both sides were Jewish. Their wealth, businesses and farm were taken from them. By 1938 they realized they must leave Germany.

This is the story of what happens to Germans who do not support the Nazis. This is how they survived and how they reunited. Though they suffered many losses and many family members were lost Mother could say, "A smile in one eye a tear in the other that's life?"

Reviewed by Lois Hanson

Book Review

Annual Spring Fling

The Seasons of Our Lives

Save the Date May 19th as We Celebrate the SEASONS OF OUR LIVES. Come join us for our Annual Spring Fling, May 19th from 2:00-4:00pm at LCC. An enjoyable afternoon is being planned of fun, food and fellowship for all our young-at-heart members and friends. Please invite a friend to join you! The more the merrier. If you would like a ride to this event, or for further questions, please contact Sally Grenz #751-1882 or Pam Hanson #391-4897.

Women's Retreat May 4-6, 2018 Camp of the Cross
Friday 4:30 PM leaving from LCC, returning to LCC
Sunday about 2 PM

Cost: \$118.00 for the weekend

Topic: 'Forgiveness For Freedom'

Ladies, please join your friends for a fun filled weekend at Camp of the Cross. Deb Carpenter will lead a discussion on the topic of forgiveness. Many activities have been planned. Bring you favorite movie to share. Beds, bedding, and community room are also provided. You will need to bring: cash for dinner on Friday evening, personal items, clothes for relaxing both inside and outside, at least one change of shoes/boots, in case there is mud! Plus snacks to be shared.

All are welcome! for the weekend or the day. If you can't spend the whole weekend come Saturday! Checks can be made out to 'Lutheran Church of the Cross'. Please Memo: Women's Retreat Questions? Contact Sally Grenz: 701 390-3049

or sallygrenz@hotmail.com

Great American Bike Race - April 28, 2018 at Legacy High School

This year marks the 22nd Annual Great American Bike Race (GABR) that raises funds for children with Cerebral Palsy. In 2017, 105 teams of 12 riders raised more than \$411,000! To date, GABR has disbursed \$3.5 million to assist families in central and western North Dakota. With an increasing amount of funds being distributed each year to families in need, your support is more important than ever.

We have two members of our church that are recipients of GABR funds and would appreciate your support. The funds go toward equipment and services that, due to cost, are otherwise unavailable to these young people.

Reece is the grandson of Shelly and James Fischer and great-grandson of Hattie Martinson. Shelly is employed at Dakota Eye Institute and they recruited a team named "Reece's Pieces" that will ride for Reece.

A.J. Marx is the son of Floy Marx and grandson of Barb Norby. AJ has participated in the GABR for several years and has a team called "Spirit".

If you would like to support these teams, please contact Hattie and Barb or you can go online to donate at <http://gabr.sandfordhealth.org/bismarck/>.

**Women's
Retreat**

**Great
American
Bike Race**

Lutheran Church of the Cross
“Making Jesus Known by Sharing Our Gifts”
Council Meeting Minutes
March 13, 2018

Meeting was called to order by President Tom Harris at 6:36pm

Devotions: John 15:1-8, Jesus the True Vine – Abiding, Becoming, Doing

Approval of February 13th Minutes – Brian J motion/Kylie B second/APPROVED

Calendar – Reviewed upcoming events in March

A recommendation was made to leave a copy of the monthly calendar of events on each table in the Fellowship Hall. It was decided that this would be a good idea and will be implemented as soon as next week. Brian will contact Sally Grenz and Ruth Jensen to let them know for decorating purposes. The calendar will be printed and placed in page protectors by Connie.

Pastor Lisa

Pastor Lisa is meeting with parents of 3rd-5th graders to discuss First Communion, which will take place during the Maundy Thursday service.

Lisa has been and will continue to attend various continuing education events. She will be attending her first Kogodus retreat at the Dakota Women’s Correctional facility in New England on March 23-24. The event that she was going to attend in Feb that was cancelled and will be rescheduled sometime in July.

Financial Peace University continues to meet every Sunday evening into April.

Treasurer’s Report – Jon H motion/Kylie B second/APPROVED

Review and discussion of General Fund income, Art Wheeler pointed out that if we continue the current trend, we will not meet our annual budget. It should be pointed out the current monthly budget amount of \$30,319.00 does not include a planned budget for our third full-time position.

Information items from the Treasurer’s Report:

All bills and statements as of Feb 28th have been paid.

A 2018 prepaid income general journal entry was made for \$1,525.00

February bank statements have been reconciled and registries are correct.

Total income for February was \$24,880.10 which exceeded expenditures of \$20,197.98 by \$4,682.12. However, total income for the year is \$47,978 or \$12,660 less than the budget goal.

**Church
Council
Minutes
March
2018**

It was decided that President Tom will present our budget shortfalls and a brief explanation of our concerns in a Temple Talk on April 8th and 11th. The overview of our General Fund Income that we see at our meetings will be distributed to give our members some numbers and history behind our concern.

This talk will become a quarterly review of our budget and will be made available to our members.

Bain Insurance Agency sent us a quotation summary for a new underwriter insurance policy. We are currently paying \$8,100 per year for our existing policy from Nationwide. The quotation from Grinnell Mutual Insurance Company would cost us \$7,034.00 per year and provide additional coverage that was not available in our existing policy.

Jon H motion/Heather M seconded/APPROVED

A special report was given by Kylie Blanchard, she was tasked to gather personal quotes about “Why I Give” from members.

These testimonials will be used in the Crossword and possible Temple Talks. She reached out to 14 members, plus the council and received seven responses. You are encouraged to send your reasons for giving to Kylie, as this will be a continuing process.

Council Member Portfolio Discussion

President Tom requested that, in the future, we only address specific issues within our committees as reported by the council liaisons. During each of the next three council meetings, two portfolio briefs will be presented by the assigned liaison. This should assist with identifying roles and responsibilities within the respective committees, assisting us in future planning.

Christian Education – Kylie Blanchard. Kylie invited several of the current teachers to the C2 meeting to discuss the current state of education within the church.

Several issues were discussed and as a result, it opened a line of communication, highlighting areas that should improve our education program. Areas that need improvement are:

Communication

Structure

Youth and children activities

Opportunities for more teachers

Need for a volunteer coordinator and parent involvement

The recruitment and hiring of a full-time staff member should focus efforts in this area.

Other areas that need our focus are Adult Education and Confirmation

The Library and Bible Studies are active, except for a Men’s Bible Study.

Tom proposed three council actions going forward

Council members were asked to review their portfolios and determine if there are any areas of their portfolios that could assist the Education portfolio

Kylie was asked to look at forming a task team to work on assisting the committees in the Education portfolio with reinvigoration and leadership with the assumption that we still may not complete the hiring process soon but need to act on these issues as soon as possible.

Council members were asked to provide suggestions on a possible volunteer coordinator for the youth/church school education team

Congregational Operations – Jon Hanson

This portfolio is one of oversight, since there is no standing committee

Coordination with full-time staff and attending the staff meeting

Reviewing and updating church policy and procedure, this includes the Facility Usage policy that we have discussed.

Updating the council on any personnel and budget issues

Point of contact for the Mission Endowment Fund

Media and communications, develop a plan to ensure efficient lines of communications within the church and its members.

Ongoing Business:

Staff Position Discussion

Good Shepherd position is filled and there was a candidate that was referred to Pastor Lisa as one that could possibly fill our needs.

Pastor Lisa has emailed that person and is going to meet to discuss possible options.

Continued discussion on whether the Position Description is too broad for our immediate needs. Focus should be to augment the work of Pastor Lisa and assist the entire church body in its ministry. It was decided to strike the entire paragraph titled, “Additional Desired Technology and Communications Skills”.

President Tom is going to pare the PD down to one page, if possible and we will continue to work with Job Services and other agencies to advertise the position.

An area of concern is and should be the impact of hiring an additional full-time position. Can we afford to hire this position, based on our current budget situation OR can we afford not to?

Council Retreat. It was decided that we conduct our council retreat on Saturday, April 14th, 9am to 12 or 1pm. We will need your input to develop an agenda and a focus of this retreat. Be prepared to have planning meetings outside of our regular council meeting to work on this important event!

Purchasing Policy and additional office signage were tabled until the April meeting.

New Business: N/A Next Meeting: April 10th, 6:30pm

President Tom adjourned the meeting at 8:50pm

Thank you for what you do for Lutheran Church of the Cross!

**Church
council
minutes
continued**

"Why I Give?"

"We give to the church because it is important to have a safe place for our family to grow and learn about Jesus. In this church, we are surrounded by a church family that loves us, supports us and cares for us when we are in need. We also give to the church and through the church so that those in need may experience that same love, support and care and know that, through this church, Christ is at work." - **Amanda and Matt Sagsveen**

The impact of your giving to the church not only supports the general operations of Lutheran Church of the Cross, but also helps us support many people, places, and activities within our church walls as well as out in the community and world. In an effort to promote stewardship and giving at Lutheran Church of the Cross throughout the year, the Church Council is gathering church members' thoughts, statements and stories on why they give to the church. You will see these statements in printed materials as well as hear these statements in Temple Talks and other presentations promoting giving throughout the year.

As we move through the year, working to remain fiscally responsible with the decisions impacting the church's budget, the Council encourages you to think about *why* you give to the church and the impact of this giving.

If you are willing to share a short statement on why you give to the church or what it means to you to give to the church, ranging from one sentence to a couple of paragraphs or even a story that has impacted your giving, please email Kylie Blanchard at kylie.blanchard@hotmail.com.



Friday Night at the Movies April 13th 6:30pm. Deb Carpenter will head up organizing the event. A potluck dinner starts the event with an enjoyable movie following the meal.

Why I
Give?

PLANNING AHEAD CAN OPEN THE DOOR TO DEEPER RELATIONSHIPS WITH FAMILY

Before you pack away all the forms and papers you collected to prepare your 2017 tax return, consider taking time to review and update important documents.

Do you have a will? When was it last reviewed?

Has anything changed in your life since last writing the will?
(births, deaths, property sale or purchase, relocation)

Where are important documents located?

Are the beneficiaries listed on assets and life insurance current?

Consider including your congregation, favorite ministry or charity as a beneficiary.

Plan ahead by writing an advance medical directive, which will explain the medical treatment you'd want if you could no longer communicate or express your wishes. Notify trusted individuals and the executor of your estate of your wishes and the location of important papers. You are sharing a valuable gift to your heirs by taking the time to organize and document your wishes. This will help your family and friends have peace of mind at an important time.

God has entrusted to each of us an abundance of gifts during our lifetime and we are responsible for the distribution of these gifts. Give direction how your gifts are to be distributed or used to further ministry. Don't be intimidated by the heavy emotions around this subject. Your honesty and openness will be a great gift to your loved ones, it's an opportunity to have a heartfelt conversation and share your legacy.

~Faith Simonieg, Serving as Assist. to the Bishop for Stewardship and Generosity, WND Synod, ELCA

Stewardship



HOLY LAND HERITAGE

January 25 – February 3, 2019

\$3,675 *BASED ON DOUBLE OCCUPANCY
Single Supplement Add \$445

Hosted by Pastor Lisa Ahlness – Lutheran Church of the Cross

- R/T Air - Bismarck
- 4 Star Accommodations
- Baggage Handling at Hotel
- 15 Included Meals
- Caesarea Maritima
- Plain of Jezreel
- Nazareth
- Sea of Galilee
- Beth Saida, Capernaum, Chorazin
- Jordan Valley
- Caesarea Philippi
- Golan Heights
- Beth Shean, Ein Harod, Jericho
- Mt. of Olives
- Bethlehem
- Jerusalem
- Dead Sea
- Ein Gedi
- Dung Gate
- Western Wall
- King David's Tomb
- Mt. Zion

*Passport is required

Valid for 6 months
beyond travel date.

Bethlehem

Sea of Galilee

Nazareth

Jerusalem

Dead Sea

Hotel List:

Leonardo Plaza– Netanya
Maagan - Tiberias
Ambassador - Jerusalem

For Reservations Contact:

JUDY'S LEISURE TOURS

**4906 16 STREET N
Fargo, ND 58102**

**701/232-3441 or
800/598-0851**

**JUDY'S LEISURE
TOURS, INC.**

Group travel at its best.



Day 1 & 2: We will depart the United States for overnight travel to **Israel**. After clearing customs, we will be met by our guide who will take us on a scenic drive through **Jaffa**, the oldest port in the world. Jonah set sail for Tarshish from Jaffa but was swallowed by a large fish. Jaffa was also the home of Tabitha, who was raised from the dead by Peter. Peter had his vision here while lodging in the home of Simon the Tanner. We will then drive north through the city of **Tel Aviv to Nethanya** where we will enjoy dinner and overnight. (D)

Day 3: We begin where the baptism of Gentiles began: at **Caesarea Maritima** (Acts 10). We visit sites such as the **sunken harbor**, the **hippodrome**, the **theatre** and the **Roman aqueduct**, then we are off to **Muhraka** ("burnt offering") on **Mt. Carmel**, with a panorama of the **Plain of Jezreel**. Continuing on to Megiddo for the background to Armageddon (Revelation 16). After surveying the Plain of Jezreel, we proceed to **Nazareth**, where we visit part of the **ancient village** and enjoying a view of Mt. Tabor. In **Cana**, we commemorate Jesus' transformation of water into wine. We end the day at the **Arbel cliff**, which affords a view over the **Lake of Galilee** and the main sites of Jesus' ministry. We have dinner and overnight on the **Sea of Galilee**. After dinner we have an option to go to the city of Tiberias for a leisurely walk around town and to watch the multimedia Galilee Experience show. (B, D)

Day 4: Today we drive to the **Mount of Beatitudes** (Matthew 5-7) where those who wish, may walk down the hill to the lake and meet the group at Tabgha, where Christians have long remembered the first feeding of the multitude (Mark 6) and nearby, the breakfast of John-21. We continue to **Capernaum** where Franciscan archaeologists believe they have uncovered the house of Peter (Mark 1 and 2). We drive a full circle around the Sea of Galilee stopping at **Beth Saida**, which is the fishing village of the Gospels. This village was the home town of Peter, Andrew, and Philip (John 1:44). Here, as well as **Capernaum** and **Chorazin**, Jesus performed most of his miracles such as healing a blind man and then cursed all three towns for their failure to repent. We continue driving around the eastern shores of the **Sea of Galilee** heading south to **Ein Gev** where we can stop for a St. Peter's Fish lunch. We stop at **Kursi** in the "**Gergesa**" of Matthew's Gospel where the evangelist locates the miracle of Swine. We then stop at a location where the **Jordan River** exits south from the Sea of Galilee heads down the Jordan Valley. We end our day at the modern **Baptismal site** of the Yardenti where the group has the possibility of renewing the Baptismal vows before heading back to our hotel for dinner. (B, L, D)



Day 5: We begin our day proceeding towards Golan Heights with many adventures along the way. After a brief stop at **Hazor**, the largest Canaanite city, for a view of **Mount Hermon** and its surroundings, we move onward to **Dan** where we indulge in a nature walk beside the **Upper Jordan** with views of ancient ruins, including the Israelite high place that supported a golden calf (I Kings 12). A short drive takes us to the spring of **Caesarea Philippi**, where Peter confessed his recognition of Jesus as Christ (Matthew 16). We will visit the stunning remains of a **first-century AD palace** belonging to Agrippas II before driving around Mt. Hermon for a glimpse of **Damascus**. We end our day on the lake in a wooden boat modeled on one from Jesus' time (Matthew 14) before returning to our hotel for dinner. (B, D)



Day 6: Today we drive down into **Jordan Valley** where we stop at the modern baptismal site at the point where the Jordan flows out of the lower Galilee. We drive to the strategic crossing point between the Jordan Valley and the Jezreel which is located in the city of **Beth Shean**. We will climb the Tel to view the **setting of Saul's death** (I Samuel 28 – II Samuel) and admire the **magnificent Roman and Byzantine ruins** including the theatre, bathhouses, ancient rest rooms, market areas and colonnaded streets. We drive through the **Jezreel Valley** west to **Ein Harod** (Judges 7), which describes Gideon's actions in thinning out his army. This is where he brought the men to the spring and sorted them on the basis of how they drank from the water. As we drive east into **Harod's Valley**, we will be amazed by the fantastic view filled with biblical history. Looking east from **Tel Jezreel**, one can imagine the crowned Jehu "driving like a madman," on his way to killing the kings of Israel and Judah. After admiring the history and scenery, we continue towards **Jericho** where we visit the Tel of this oldest city and view the traditional mountain of Jesus' temptation. Ascending the Roman road along Wadi Qilt, we stop for a look at St. George's Monastery. Finally atop **Mt Scopus** as we behold **majestic Jerusalem** where we have our dinner and overnight. (B, D)

Day 7: O Jerusalem! After an orientation on the **Mt. of Olives**, we descend the traditional Palm Sunday road to **Dominus Flevit** ("**The Lord weeps**"), remembering Jesus' entry (Luke 19). We continue to **Gethsemane** (Matthew 26) and visit the garden and church where we have quiet time to reflect. We then drive to the church grounds called Peter in Gallicantu, which affords the best view of early Jerusalem from the west. Here, the Assumptionist Fathers propose, was the house where the High Priest Caiaphas interrogated Jesus. On our trip south to the Bethlehem region, we pass **Rachel's Tomb** and go to **Shepherds' Fields**. In **Bethlehem** we walk through its historic alleyways and markets to behold the **Church of Nativity**. We pass by the Knesset, the Israeli Parliament on our way to the **Shrine of the Book**, which houses the **Dead Sea Scrolls**, and a stop at the **Israel Museum** which includes an outdoor model of what **Jerusalem** may have looked in 66 AD. (B, D)



Day 8: We drive to **Bethany**, the home of Martha and Lazarus, driving through the Judean desert to Qumran, where we view Cave #4, which contained the greatest quantity of **Dead Sea Scrolls**, before continuing south to **Masada** where we take the cable car to the top, visiting **Herod's mountain bunker** and the last stronghold of the Jewish revolt against Rome (66-73 AD). We will have the unique opportunity to float in the **Dead Sea** (at minus 1390 feet, as low as you're ever likely to get). We enter the nature reserve of **Ein Gedi**, rich in flora and fauna, and walk to a lovely waterfall. We return to our hotel in Jerusalem tonight for our dinner and overnight. (B, D)

Day 9: We start the day at **Dung Gate**, where we take the time to examine the ruins which include steps where Jesus taught and He and his disciples walked. We then experience the **Western Wall**, Judaism's holiest site and view the **Dome of the Rock** and the **al-Aqsa Mosque**, the third holiest site of Islam. We find our way to the **Pools of Bethesda** (John 5) and **St. Anne's Church** which is perfectly preserved from the Crusader period. Our adventure continues as we walk through the Arab Souks and past the Armenia Quarter and exit the Old City, where we visit **King David's Tomb** on the grounds of **Mt. Zion**. From there we continue to the **Garden Tomb** where we end our tour with a special visit and a private communion on its grounds. Tonight we get together for our farewell dinner where we can reminisce about our fabulous time before our late departure towards home. (B, D)



Day 10 – Wednesday, Feb 3: We travel overnight to arrive home today, awed by the history and heritage we have experienced and excited to share our adventure with family and friends. We look forward to our next trip with Judy's Leisure Tours.

REGISTRATION INFORMATION

TOUR COST: \$3,675 P/P DOUBLE OCCUPANCY--\$4,120 SINGLE OCCUPANCY

1. **Registration:** complete each line and sign.
2. **Deposit:** \$350 p/p or \$700 per couple. This is a cash price; we prefer personal checks, money order/cashier's checks, but we accept credit cards or cash. Credit Card information is on last page. Mail with deposit to address listed on front page.
3. **Registration deadline:** First come, first served. Your name will be added to the roster when registration and deposit is received by Judy's Leisure Tours. Registrations will be accepted until tour is full, or cutoff date; book early.
4. **Final payment:** Final payment is due 60 days prior to departure.
5. **Final documents:** Including luggage tags, itinerary with pickup schedule along with other helpful information will be mailed **approximately 2 weeks before departure**. Please mark your calendar now.
6. **Walking:** There is some walking on this tour, please start your walking program now so you can travel in optimal health.

Passport: please check expiration date - now must be good for 6 months past return date.

TRAVEL INSURANCE IS HIGHLY RECOMMENDED AND BASED ON AGE OF TRAVELER

CUT.....(PLEASE PRINT CLEARLY).....CUT

IF TRAVEL COMPANION IS NOT A SPOUSE, SEPARATE REGISTRATION FORMS ARE REQUIRED
PLEASE REGISTER NAMES AS THEY APPEAR ON YOUR PASSPORT WHICH IS REQUIRED FOR INTERNATIONAL TRAVEL.

TOUR DESTINATION: Holy Land Heritage January 25 – February 3, 2019

GROUP LEADER/CLUB: Pastor Lisa Ahlness – Lutheran Church of the Cross

LEGAL NAME: _____ / _____ / _____ DATE OF BIRTH _____
(First) (Middle) (Last)

Place of Birth _____

IF TRAVEL COMPANION IS SPOUSE:

SPOUSE LEGAL NAME: _____ / _____ / _____ DATE OF BIRTH _____
(First) (Middle) (Last)

Place of Birth _____

ADDRESS: _____ / _____ / _____ / _____
(No. & Street) (City) (State) (Zip)

PH: _____ / _____ EMAIL ADDRESS: _____
(Home Telephone) (Cell)

ROOMMATE: _____ HOTEL ROOM REQUEST: 1 – Bed or 2 Beds
(Circle one)

OTHER HOTEL ROOM REQUESTS: _____

RE YOU A U.S. CITIZEN? Y / N PLEASE LIST NAME (S) AS FOLLOWS ON MY NAMETAG: _____

Passenger 1-Passport number: _____ Date of Issue _____ Exp. Date: _____

Passenger 2-Passport number: _____ Date of Issue _____ Exp. Date: _____

**Air Gateway: Departure airport for this tour: _____ Air Seat request () Aisle () Window () Next to
Traveling companion.**

We can't guarantee your seat preference, but will make your request known to the airline.

I understand all terms & cancellation policies of this tour, and that any travel insurance premiums are non-refundable:

PASSENGER (S) SIGNATURE: (1) _____ (2) _____

If You Would Like To Pay With Credit Card

Credit Card Type: _____ Credit Card Number: _____

Name On Card: _____ Expiration: _____

Security Code: _____ Amount to Charge on Card: _____

Billing Address _____

Signature required for Credit Card use: _____

**Professional Tour Planners
Judy's Leisure Tours, Inc
Group Travel at its Best!**

RESPONSIBILITY CLAUSE: This tour is arranged Near East Tourist Agency, and offered by Judy's Leisure Tours Inc, and acts only as an agent for tour members in securing airfare, reservation for accommodation, transportation, sight-seeing, restaurants, or any other services included with this itinerary. Therefore tour members agree that the sponsoring organizations and Judy's Leisure Tours are not liable for any accidents or injuries, loss or damage of personal property, delays or irregularities, liability or expenses to person or property due to act of default of the air carrier, hotels or any companies providing services. Each passenger understands that insurance is included and they agree that they do understand the coverage of this policy.

TOUR MEMBERS: Judy's Leisure Tours Inc. reserves the right to reject or terminate membership of any person whose behavior detracts from the operation of the tour in the best interest of all tour passengers. This tour as all sightseeing tours does have walking involved, please prepare accordingly.

LUGGAGE RESPONSIBILITY: Luggage handling of 1 piece per person is included in the tour cost at the owner's risk. If not already included, we do recommend you purchase travel insurance to cover any unforeseen luggage loss or damage. Should a wheelchair or walker be needed for this tour, passenger must notify us in advance, and there may be an additional charge added for handling. This will be allowed only if space is available to store during the tour. You are also required to bring along a personal care assistant to push a wheelchair or to help you during this tour should you require assistance.

ITINERARY REVISIONS: Judy's Leisure Tours Inc., along with any Airline, or Motor coach Company associated with this itinerary, reserve the right to make changes to the itinerary and are not responsible to any person for expense, loss of time or money or other circumstances resulting from the change in itinerary or change in tour arrangements made by it for tour members. Judy's Leisure Tours Inc. and any other tour supplier reserve the right to cancel or alter the tour, if we deem it necessary, and to substitute hotels, tour features, and change of routings as conditions require.

FUEL SURCHARGES & TAX INCREASES: Airlines and Motor coach companies have the right to assess a fuel or currency surcharge if there is a significant increase in fuel costs or significant currency exchange drop. In the event this is added, the additional cost will be billed to each passenger.

TOUR: Tour content has been prepared by: Judy's Leisure Tours – 4906 16 Street N, Fargo, ND 58102 judyit@cablone.net 701-232-3441 or 800-598-0851 <http://www.judysleisuretoursinc.com/> and <https://www.facebook.com/judysleisuretours>

**JUDY'S LEISURE
TOURS, INC.**



Group travel at its best.

Sun	Mon	Tue	Wed	Thu	Fri	Sat
1 Easter Sunday 8:00 Service Light Breakfast between services 10:00 Service	2	3	4 Confirmation 7p	5 Quilting 1pm 8p AA Mtg.	6	7 4:30p Optional Sm Group River practice
8 9:00 Worship Team Practice 9:15 Church School 10:00 Worship 11:00 Coffee Hour/ 7pm Financial Planning	9	10 Supper 5p C2 Mtgs 5:30p Church Council 6:30p	11 Supper 5:00-5:45 5:35 Living Waters Practice Wed. Worship/6p Church School/ Confirmation 7p	12 Quilting 1pm 8p AA Mtg.	13 Friday Night at the Movies 6:30pm	14 Church Council Retreat 9—1pm Book Club 12:30pm
15 9:00 Worship Practice 9:15 Church School 10:00 Worship 11:00 Coffee Hour 7pm Financial Planning	16	17	18 Supper 5:00-5:45 5:35 Living Waters Practice Wed. Worship 6p Church school/ Confirmation Group	19 Quilting 1pm 8p AA Mtg.	20 Newsletter deadline	21 4:30p Optional Sm Group River practice
22 9:00 Worship Team Practice 9:15 Church School 10:00 Worship 11:00 Coffee 7pm Financial Planning	23 Knitting for Others 1pm	24	25 6:30am MM Bible Study Supper 5-5:45 5:35 Living Water Practice Wed. Worship 6p Church school/	26 Quilting 1pm 8p AA Mtg.	27	28 4:30p Optional Sm Group River practice
29 9:00 Worship Team Practice 9:15 Church School 10:00 Worship 11:00 Coffee Hour	30		April Calendar 2018	Altar Focus: Emergency Food Pantry		

The WND Synod Sending Team invites you to join us for the 3rd Annual #HungerRide, taking place May 29 - May 31, 2018. The route is TENTATIVELY set to start at the Ramkota Inn in Bismarck and end at the Synod Assembly at the Ramkota Inn in Bismarck three days later.

Along the way, we will visit area churches, stay with congregational members, and experience the majestic beauty of Western North Dakota! Together we will raise awareness of hunger issues facing God's people and funds to support ELCA World Hunger. Riders may ride the full route or just a portion of the ride.

HungerRide

If you are interested in biking, or in riding along (help haul supplies)

#Hunger Ride - Ramkota Inn, Bismarck, May 29-31

please contact Barb Cooper at (701) 629-5075 or coopers@srt.com.

There is no cost to participate and all riders will receive a free #HungerRide t-shirt! Registration due by May 20th.

Registration forms are [online](#) or linked below. You can fill out the forms online or send them to Barb Cooper at PO Box 154, Berthold, ND 58718

C2 and Church Council Meetings



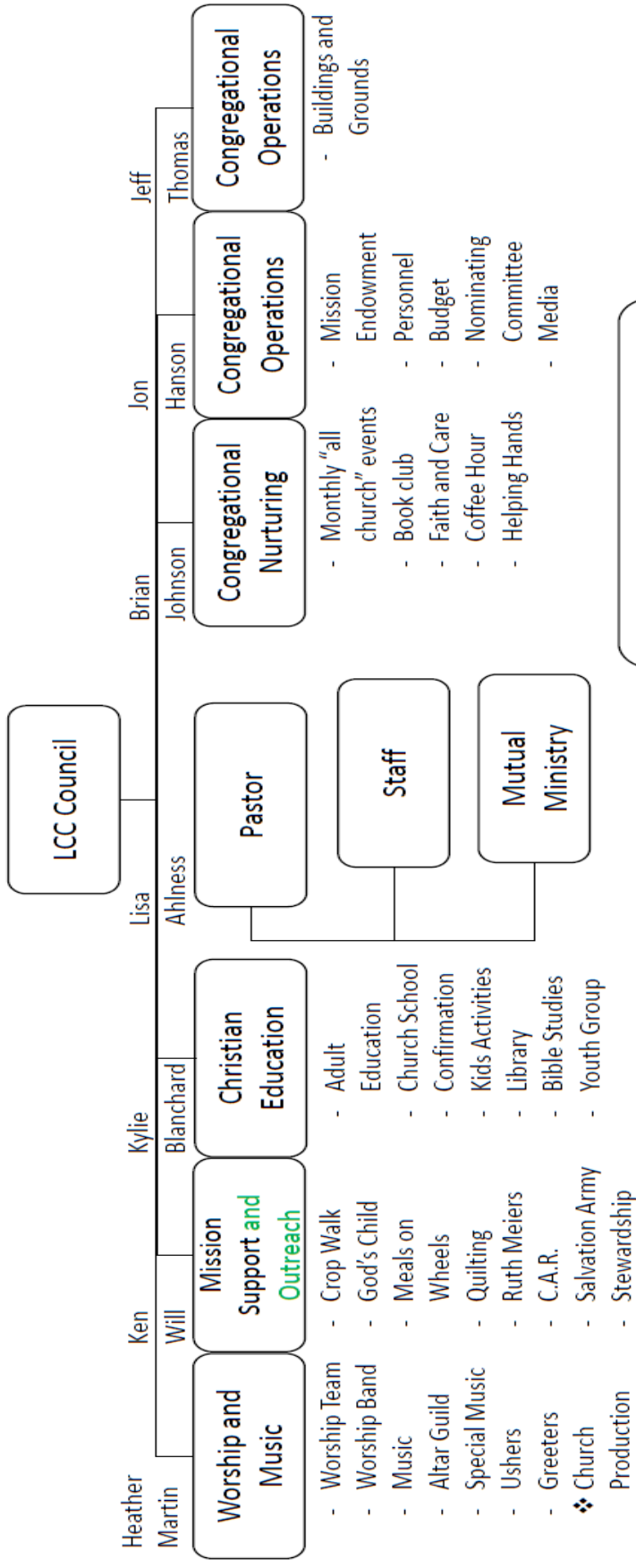
The next Church Council Meeting is at 6:30pm Tuesday, **April 10**. The C2 committees meet at 5:30. Council meetings are open to everyone. If you have an item to come before the Council, please contact Tom Harris prior to the meeting.

Our angel for this month is **Deb Carpenter**. Deb is so active at LCC we sometimes wonder how she can sustain a life “on the outside”! As our movie mystery maven (because she never tells us the movie ahead of time) she has for years hosted “Friday night at the Movies” the second Friday of each month at church. She also watches approximately 13 movies to find each one that matches her high standards as family friendly enough to be shown at church. Amazingly, almost none of us have heard of the movies beforehand, and these movie finds are as fun and enjoyable as the potlucks and fellowship that accompany them.

Deb greets everyone with a smile, whether she’s leading the early morning Bible Study or the Living Generously conversations; singing with the River and Living Waters (the Wednesday group), where she mentors our young singers; or reading Scripture for worship. She is a whiz in the kitchen, and made some of the cleverest creations for the Cookie Walk in December and the Easter breakfast. She is kind and compassionate, keeping up with the lives of others when she misses them at church or something is going on in their lives.

Deb is the leader of the dramas that have added so much to our Lenten worship. She has spent hours and hours researching, choosing, searching out and inviting actors, coaching, rehearsing, costuming, and line prompting for performances – a real enrichment to our worship life. Thanks, Deb, for all you do – one of the angels among us!

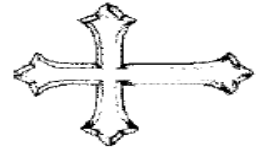
Angels
Among
Us



Executive Council
 President: Tom Harris
 Vice President: Ken Will
 Secretary: Jon Hanson

- Brian Johnson: brianmpd@yahoo.com; 221-9688, cell 391-1082
- Heather Martin: hcbmartin@hotmail.com;
- Kylie Blanchard: kylie.blanchard@hotmail.com; 391-0373
- Jeff Thomas: tjeffrey45@yahoo.com; 258-1395, cell 955-3632
- Jon Hanson: jdhanson56@gmail.com; 391-3416
- Ken Will: kenwill@bektel.com; 258-7127, cell 226-5670
- Tom Harris: tharrislcc@gmail.com; 751-6371, cell 390-9421
- Pastor Lisa Ahlness: lisaahlness@hotmail.com; 258-6573, cell 220-9011
- Connie Werner: churchsecretary@midconetwork.com; 701-223-1001

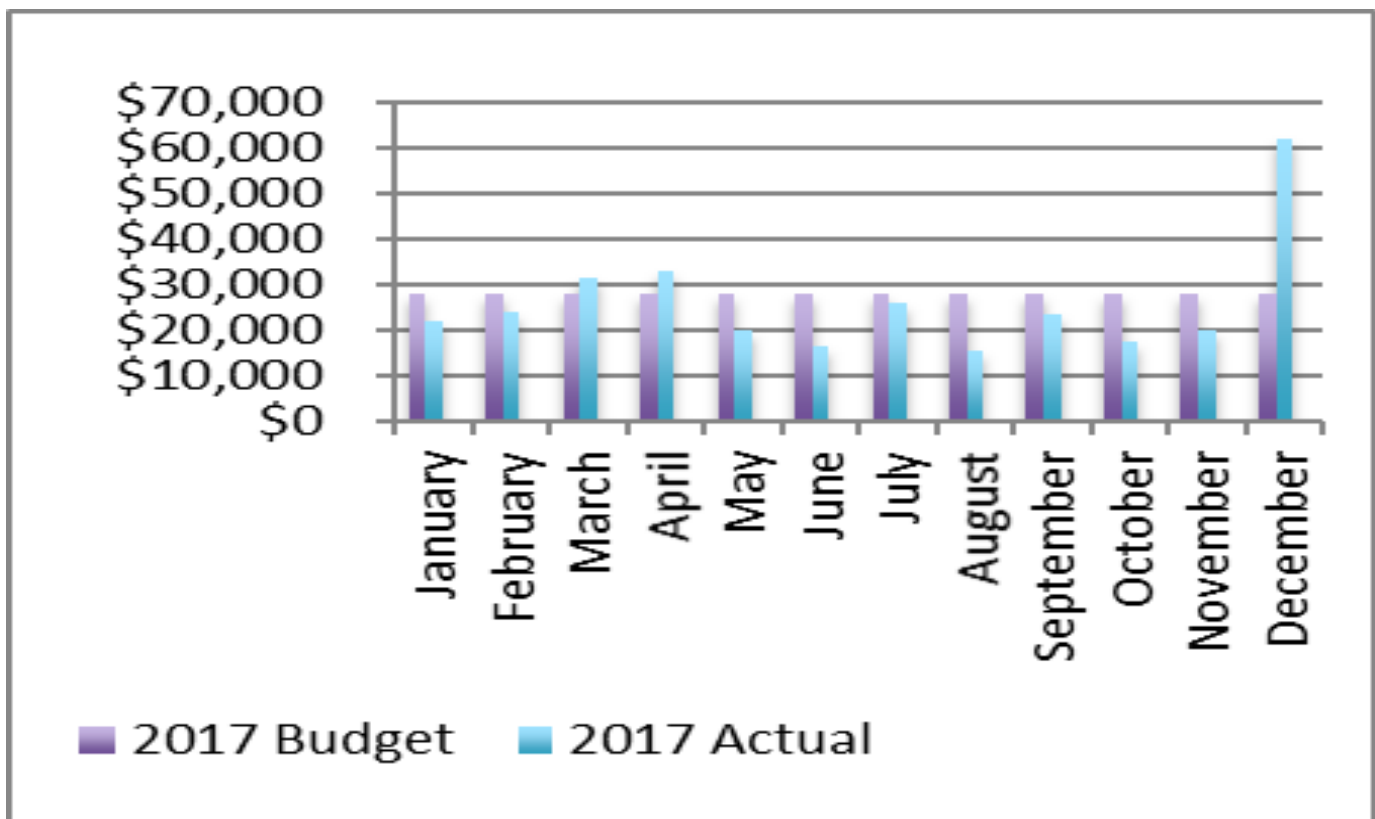
**MAKING JESUS
 KNOWN BY
 SHARING OUR
 GIFTS**



Greetings and peace be with you!

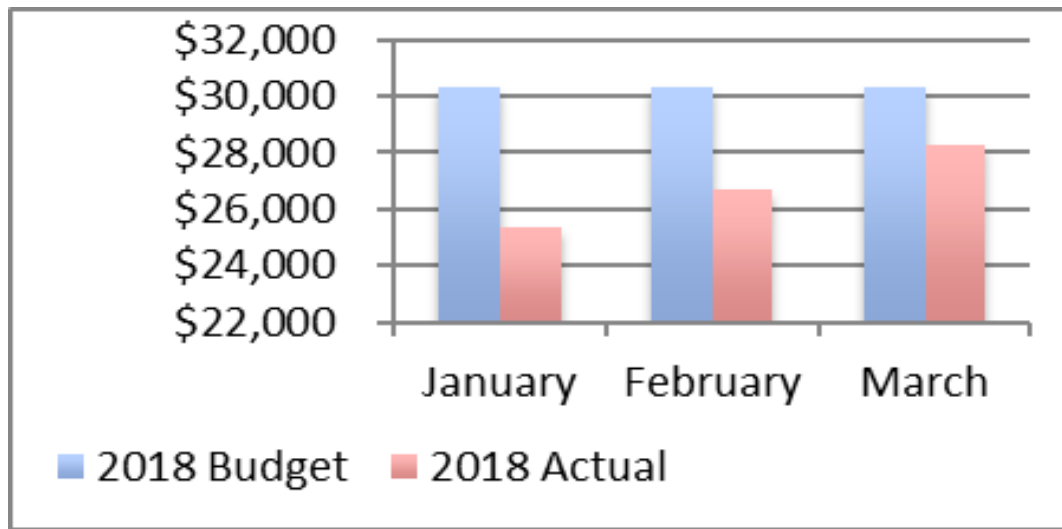
	2017 Budget	2017 Actual	% of Budget
January	\$27,716	\$22,004	79.4%
Feb.	\$27,716	\$23,644	85.3%
March	\$27,716	\$31,406	113.3%
April	\$27,716	\$32,769	118.2%
May	\$27,716	\$19,671	71.0%
June	\$27,716	\$16,366	59.1%
July	\$27,716	\$25,689	92.7%
August	\$27,716	\$15,312	55.2%
Sept.	\$27,716	\$23,080	83.3%
October	\$27,716	\$17,100	61.7%
Nov.	\$27,716	\$19,943	71.9%
Dec.	\$27,716	\$62,141	224.2%
Totals	\$332,589	\$309,125	92.9%

This past January, in a monumental transition signaling the last phase of payments for significant improvements to our church facilities church members voted to combine the general and building funds. As your church council, we've taken on the task to manage the church budget responsibly. We also want to ensure the budget and expenses are consistent with the gifts of the church throughout the year, sharing transparently with the church body. Here's a quick look at the 2017 General Fund. The church had a significant intake of gifts in March, April, and December last year with gifts achieving 92% of giving goals for the year. Not to worry! Actual costs were below expenses for the year.



With the combination of the two budgets, the General Funds planned budget for 2018 appears to go up, though the single budget is more a reflection of what used to be two funds. Here's a look at our current progress for 2018.

	2018 Budget	2018 Actual	% of Budget
January	\$30,319	\$25,374	83.7%
February	\$30,319	\$26,732	88.2%
March	\$30,319	\$28,259	93.2%
Totals	\$90,957	\$80,365	88.3%



This budget does not include anticipated costs approved but not yet included in budget and actual expenses to hire a Director of Discipleship. Overall, actual gifts are below the voted budget for 2018. Again, it's important to note that, so far, church expenses to date have been \$13,500 less than church gifts as of the end of March 2018.

In addition to supporting regular church expenses for 2018, our church continues to support monthly mission programs, local benevolences, and the Lunch at 1st program through these funds. In April, LCC will continue our support of the Camp of the Cross ministry at the annual S'mores and More event, raising funds to support camp facilities. More importantly, church members continue to nurture each other and others in the local community through outreach, education, and prayer. As we transition from our study of understanding the nature of a generously giving heart and the Lenten lessons of the Sunday and Wednesday services, we encourage everyone to reflect on how you can be a part of the LCC and Christian mission. Thanks for your time and may Christ be with you.

Warmest regards, Tom Harris

1004 E Highland Acres Rd
Bismarck ND 58501
Phone:701.223.1001

churchsecretary@midconetwork.com

E-News

Worship Times:
Wednesday Worship
6:00pm

Sunday Worship
The River Service
10:00am

Lisa Ahlness, Pastor

Office Hours:
M -TH 8-4pm
Fri. 8-noon School Year
Summer Hours 9-1
Mon.—Fri

Lutheran Church of the Cross

2018 Church Council

Tom Harris, President	390.9421
Ken Will, Vice President	258.7127
Jon Hanson, Secretary	391.3416
Jeff Thomas	955.3632
Brian Johnson	391-0872
Kylie Blanchard	391.0373
Heather Martin	202.8316

The Church Council and the C2 Committees meet once a month; the second Tuesday, at 5:30pm. The Council meetings (at 6:30pm) are open to the congregation and all are encouraged to attend a meeting or to visit with a Council member if you have questions

Making Jesus Known by Sharing our Gifts